



Riverside Court, Nine Elms Lane,
Nine Elms, SW8

£1,500 Per Week,

NAPIER WATT

T: 0207 935 0011
E: enquiries@napierwatt.co.uk
W: napierwatt.co.uk

35 Berkeley Square, Mayfair, London, W1J 5BF







Description

Stunning, lateral, four-bedroom apartment set on the fourth floor (with lift) of this purpose built apartment block, overlooking the river. The property has air conditioning and has been finished to a high standard with wooden flooring throughout and comprises a generously sized living room with dining area, modern kitchen leading to a balcony with views over the Thames, utility room, four large bedrooms, two with en-suite bathrooms, all with built-in wardrobes and a separate shower room. The building is a short walk to Vauxhall Station as well as a variety of shops bars and amenities. The apartment also has secure underground parking. Available, furnished.

4 Bedrooms : 3 Bathrooms : Lifts : Balcony : River Views : AC : Parking : Wandsworth Council Tax Band G : EPC Rating

Key Features

- RIVER VIEWS
- LATERAL
- WOODEN FLOORING
- UNDERGROUND PARKING
- PASSENGER LIFT
- HIGH QUALITY FINISH
- MARBLE BATHROOMS
- AIR CONDITIONING

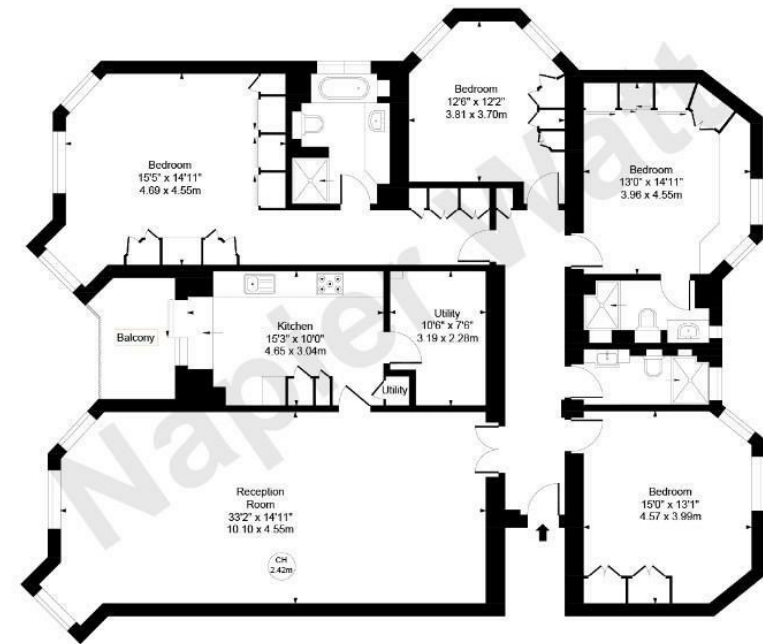
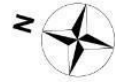
Terms

Fees & Charges: Tenancies exceeding £100,000 Per annum £480 inc VAT, Tenancies where a company is a tenant £480 Inc VAT.

Riverside Court, SW8

Approx. Gross internal Area 2007 Sq Ft - 186.48 Sq M

Key :
CH - Ceiling Height



Fourth Floor

Not to scale, for guidance only and must not be relied upon as a statement of fact.
All measurements and areas are approximate only

IMPORTANT: We would inform prospective purchasers that these sales particulars have been prepared as a general guide only. A detailed survey has not been carried out, nor the services, appliances and fittings tested. Room sizes should not be relied upon for furnishing purposes and are approximate. If floor plans are included, they are for guidance only and illustration purposes only and may not be to scale. If there are any important matters likely to affect your decision to buy, please contact us before viewing the property.